

# FROM PUBLIC POLICY TO FIELD IMPLEMENTATION: PROMOTING DEFORESTATION-FREE LIVESTOCK FARMING IN MADRE DE DIOS, PERU PHASES I AND II

## THE PROBLEM

In Peru, 45% of GHG<sup>2</sup> emissions come from the LULUCF<sup>2</sup> sector



Livestock farming in the Amazon is traditional and extensive

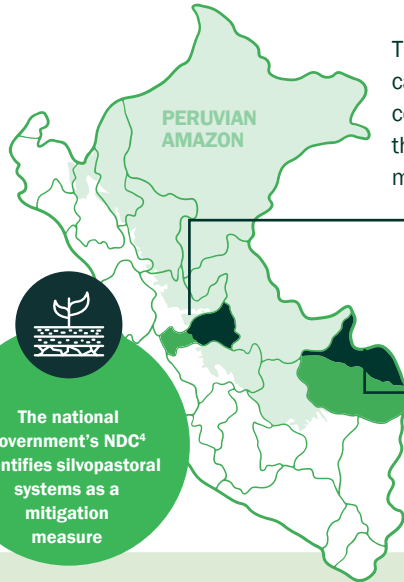
Deforestation carried out to extend working areas, generating high pressure on the forests and soil erosion (+50,000ha converted)



Lack of innovation results in low productivity (1 head/ha)



GOREMAD<sup>3</sup> estimates that emissions from the agricultural sector (0.19 TgCO<sub>2</sub>e in 2015) will double by 2050



This project seeks to introduce silvopastoral practices led by cattle ranching families to combat increasing deforestation, contribute to the local economy, and lay the groundwork for the financing and development of a deforestation-free meat market.

### 1 FFS<sup>5</sup>

Oxapampa province in Pasco

Oxapampa is the logistics hub for the central jungle, where all cattle going to Lima depart from.

### 5 FFS<sup>5</sup>

Tambopata and Tahuamanu' provinces in Madre de Dios, are the most biodiverse regions in the Peruvian Amazon

The national government's NDC<sup>4</sup> identifies silvopastoral systems as a mitigation measure

## CAPACITY BUILDING

Design and implementation of training programs to strengthen regenerative cattle ranching practices with gender and youth approaches.

+350 PARTICIPANTS

45% participation of women  
+50 young people

50

demonstration plots in MDD<sup>6</sup>

150

workshops held to strengthen capacities



## WE DEVELOP TECHNICAL STUDIES, ACTIVITIES AND BUSINESS PLANS TO:



Study the potential demand for deforestation-free meat from MDD

Support livestock associations (2) and meat processing plants (1) to raise public financing

Design a verification framework for sustainable Amazonian livestock farming

Connect actors to close gaps between supply/demand and academia/private sector

Identify public financial incentives for regenerative livestock farming

## WE PROMOTE DIALOGUE, DISSEMINATION OF INFORMATION AND EXCHANGE OF KNOWLEDGE BY:

Bringing together different actors in face-to-face/virtual spaces to promote peer exchange

Designing agendas to analyze the challenges and opportunities of regenerative livestock farming



Developing knowledge packages on deforestation-free livestock

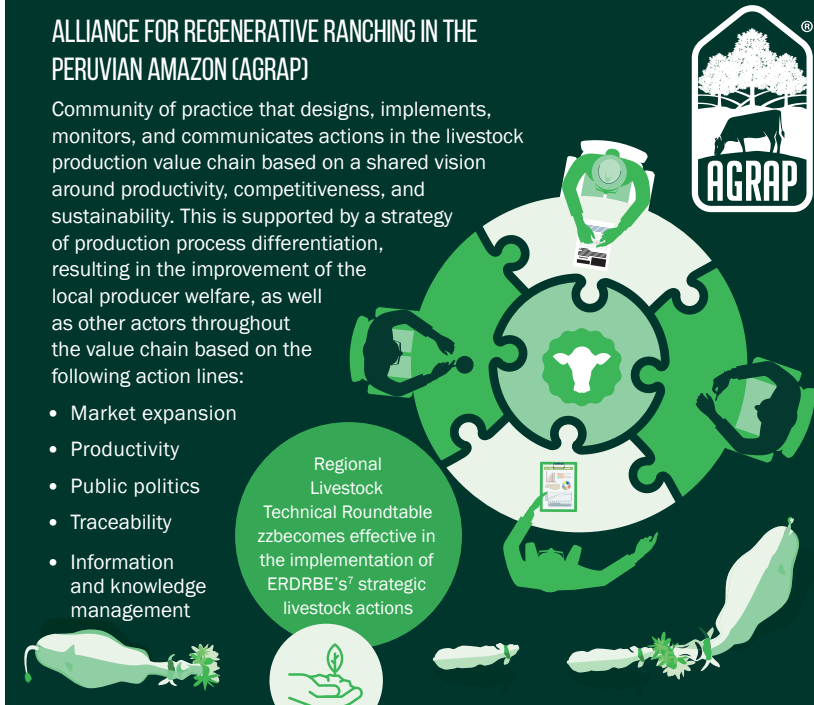
Disseminating project milestones at regional, national and international levels

## ALLIANCE FOR REGENERATIVE RANCHING IN THE PERUVIAN AMAZON (AGRAP)

Community of practice that designs, implements, monitors, and communicates actions in the livestock production value chain based on a shared vision around productivity, competitiveness, and sustainability. This is supported by a strategy of production process differentiation, resulting in the improvement of the local producer welfare, as well as other actors throughout the value chain based on the following action lines:

- Market expansion
- Productivity
- Public politics
- Traceability
- Information and knowledge management

Regional Livestock Technical Roundtable becomes effective in the implementation of ERDRBE's<sup>7</sup> strategic livestock actions



4,000 HECTARES converted from 150 FARMS in the deforested Amazon through regenerative livestock farming has showcased great results

- LANDSCAPE CONNECTIVITY
- INCREASE IN PRODUCTIVITY
- CARBON EMISSION MITIGATION
- EQUITABLE DISTRIBUTION OF BENEFITS
- MARKET AND FINANCIAL SECTOR INTEGRATION

FINANCED BY: UK PACT GREEN RECOVERY CHALLENGE FUND

CONSORTIUM: UNDER2 SECRETARIAT CLIMATE GROUP WWF TROPICAL FOREST ALLIANCE

AGRAP MEMBERS: ZEDINA CONSERVATION INTERNATIONAL Prigorifico Manu

PERU Ministerio de Agricultura y Riego MTG Earth Innovation Institute CLIMATE GROUP MAFROX DEL CAMPO A TU MESA

GHG<sup>2</sup>: Greenhouse Gas LULUCF<sup>2</sup>: Land Use, Land-Use Change and Forestry, GOREMAD<sup>3</sup>: Regional Government of Madre de Dios, NDC<sup>4</sup>: Nationally Determined Contribution, FFS<sup>5</sup>: Field Farming School, MMD<sup>6</sup>: Madre de Dios, ERDRBE<sup>7</sup>: Regional Low Emission Rural Development Strategy